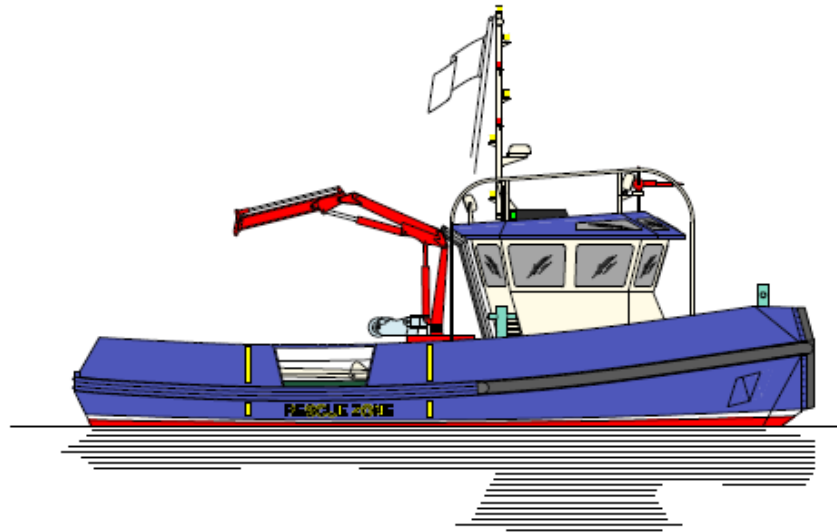


# Atlantis

MARINE SERVICE LTD.



**AMS BOATYARD**

**Building of Steel and Aluminium Workboats**

**Tuzla, Istanbul, Turkey**



## **Main Objectives:**

- **Building of Steel and Aluminum Workboats upto 24 m:**
  - **Tug Boats, Mooring Boats**
  - **Crew Boats, Pilot Boats**
  - **Patrol and Rescue Boats**
  - **Ambulance Boats**
  - **Anti-pollution Boats**
  - **Barges, Landing Crafts**
- **Alternative Lighter Construction by HDPE**
- **Yachts**



## **Our Vision:**

- Our vision is to be the best boat builder capable to cover all requirements of our world-wide clients in the maritime industry.

## **Our Mission:**

- Be customer focused
- Remain reliable, honest and friendly
- Grow with careful steps

## **Our Values:**

- Transparency, honesty and discipline in all we do
- Commitment to excellence and customer satisfaction

## Certificates:





**We are in Istanbul, Turkey....**





**AMS Boatyard in Tuzla/Istanbul/Turkey**



**AMS Boatyard in Tuzla/Istanbul/Turkey**





**AMS Boatyard in Tuzla/Istanbul/Turkey**



**AMS Boatyard in Tuzla/Istanbul/Turkey**





**AMS Boatyard in Tuzla/Istanbul/Turkey**

## Capacity of Boatyard:

- Boatyard dimensions 25x12 m with ceiling height of 10 m.
- Max. boat length to be built: 24 m.
- Max. boat height to be built: 8 m.
- Max. boat weight to be built: 100 ton.
- Head crane capacity: SWL 10 ton + SWL 5 ton.
- Accessible mobile crane capacity: SWL 100 ton.
- Means of launching: conventional slipway by pulleys and ropes.
- Distance from gate to slipway: 30 m.



## Management Structure:

- **Caner Ararat:**
  - **Owner & Managing Partner**
  - **Naval Architect & Marine Engineer**
  - **Experience: 28 years**
  - **Project Responsibilities: Marketing, Procurement, Admin.**
- **Cuneyt Niran:**
  - **Owner & Managing Partner**
  - **Naval Architect & Marine Engineer**
  - **Experience: 28 years**
  - **Project Responsibilities: Subcontractors, Safety, Admin.**



## Workforce:



- 4 Naval Architects and Marine Engineers
- 10 permanent workers
- Unlimited workforce from local sub-contractors
- Design and Engineering support from local design office
- Local office available for IACS member class societies



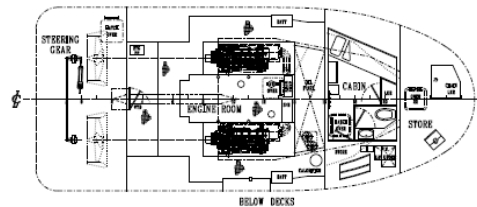
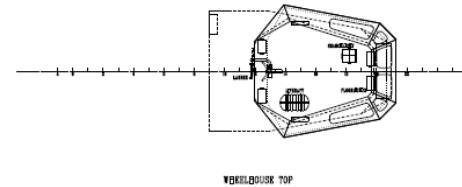
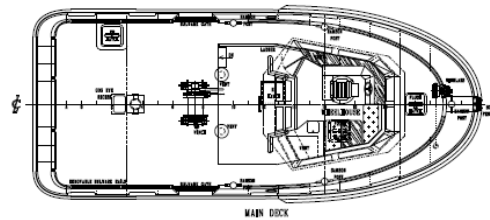
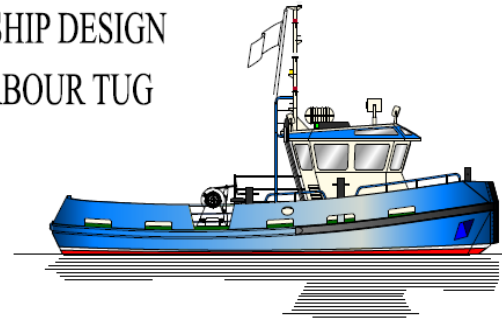
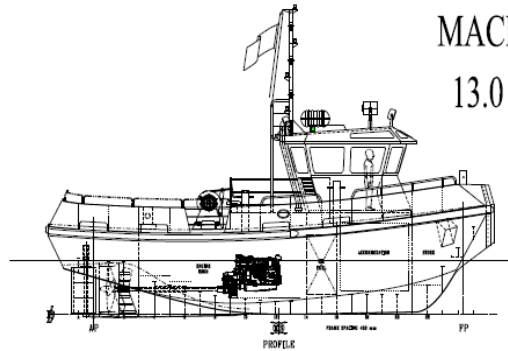
### **Activities Performed In-House by Own Staff and Sub-Contractors:**

- **Hull Fabrication and Painting**
- **Piping and Outfitting**
- **Machinery, Equipment and Electricity**
- **Carpentry**
- **Launching and Trials**

### **Activities Outsourced:**

- **Design and Engineering**
- **Steel and Aluminium CNC Cutting**
- **NDT**
- **Classification**

MACDUFF SHIP DESIGN  
13.0 m HARBOUR TUG

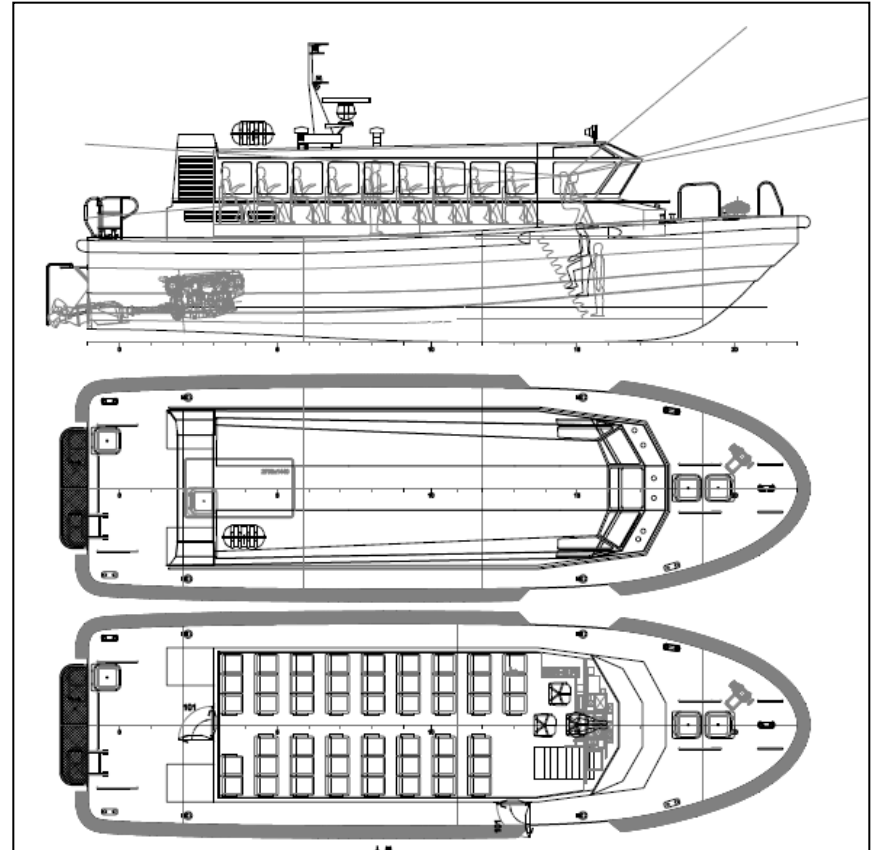
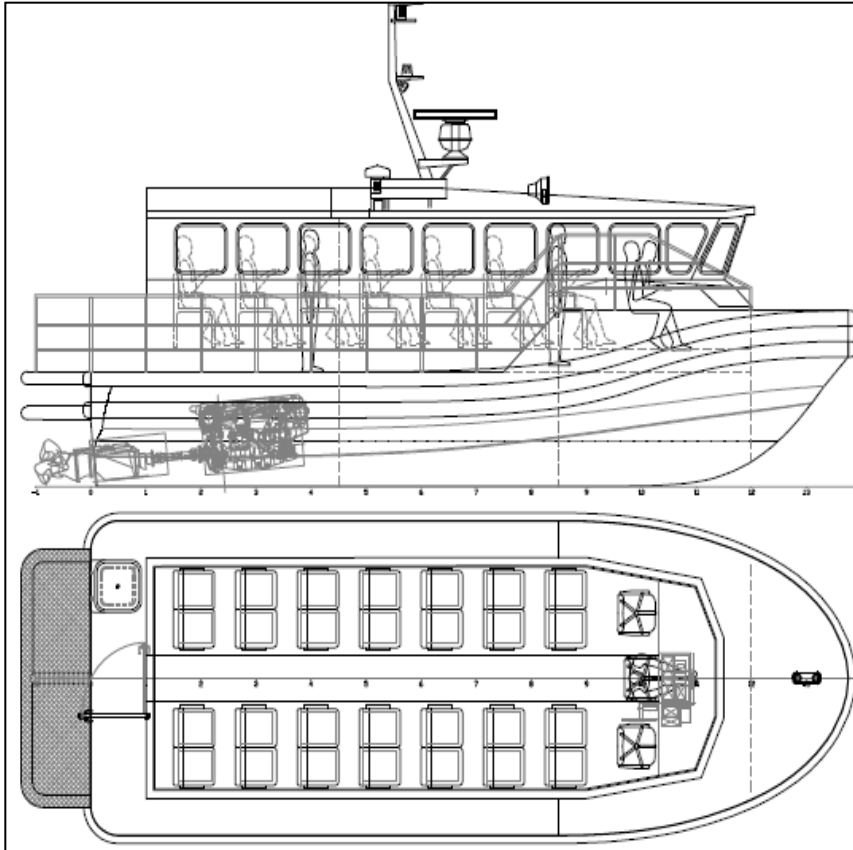


PRINCIPAL DIMENSIONS

LENGTH O.A. (Hull)	13.00 m
LENGTH B.P.	10.97 m
BREADTH MLD.	5.40 m
DEPTH MLD.	2.47 m

NO.	DESCRIPTION	UNIT	QTY	DATE
1	13.0m HARBOUR TUG	NO.	1	2024/01/10
2	GENERAL ARRANGEMENT	NO.	1	2024/01/10
3	MAIN DECK	NO.	1	2024/01/10
4	BELOW DECKS	NO.	1	2024/01/10
5	WORKLOAD TOP	NO.	1	2024/01/10
6	PROFILES	NO.	1	2024/01/10
7	3D PERSPECTIVE	NO.	1	2024/01/10
8	PRINCIPAL DIMENSIONS	NO.	1	2024/01/10
9	ARRANGEMENTS ACCORDANT WITH REG.	NO.	1	2024/01/10
10	THESE DRAWINGS HAVE BEEN DESIGNED BY	NO.	1	2024/01/10
11	DESIGNED BY	NO.	1	2024/01/10
12	CHECKED BY	NO.	1	2024/01/10
13	APPROVED BY	NO.	1	2024/01/10
14	DATE	NO.	1	2024/01/10

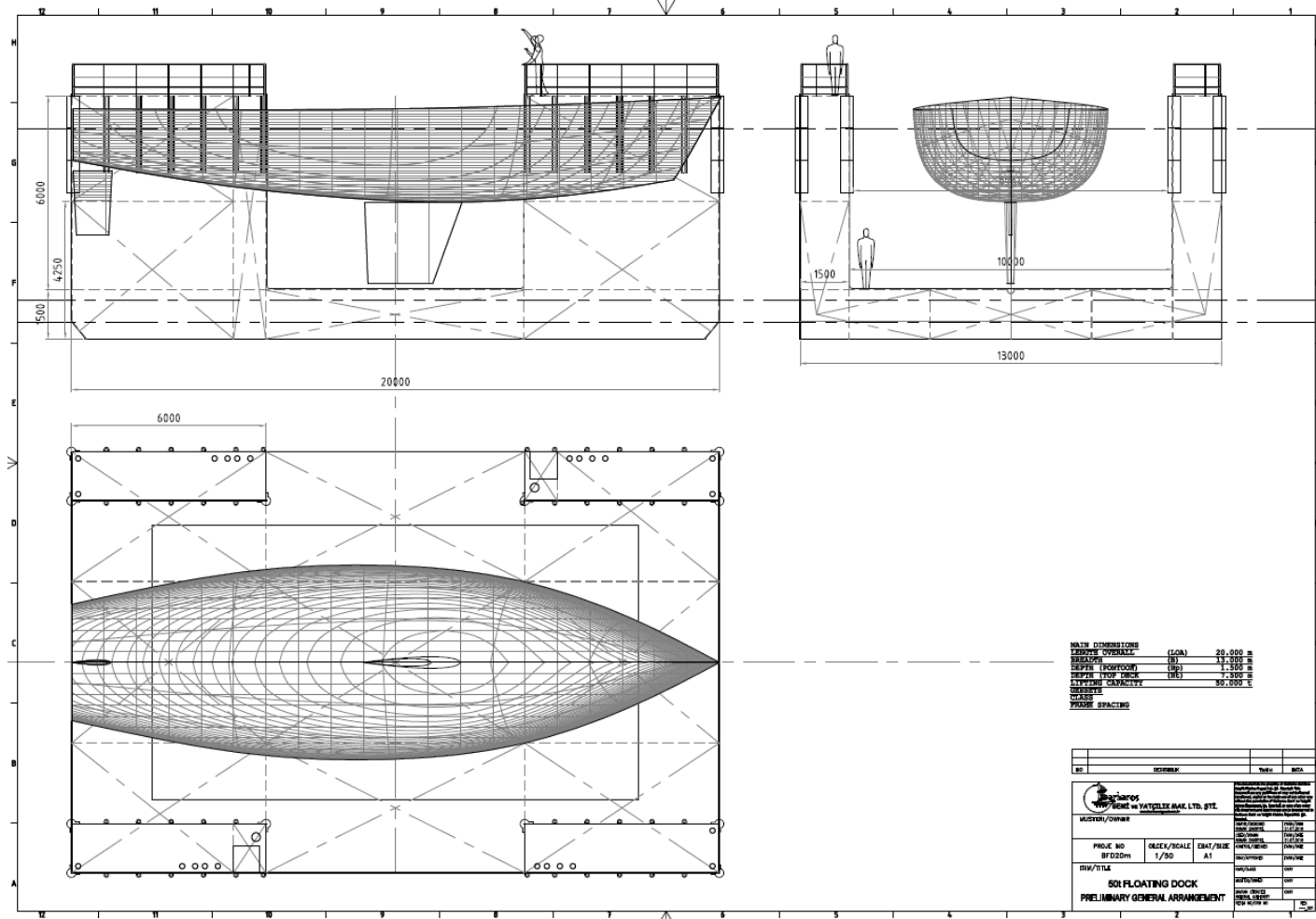
# Harbour Tugboats



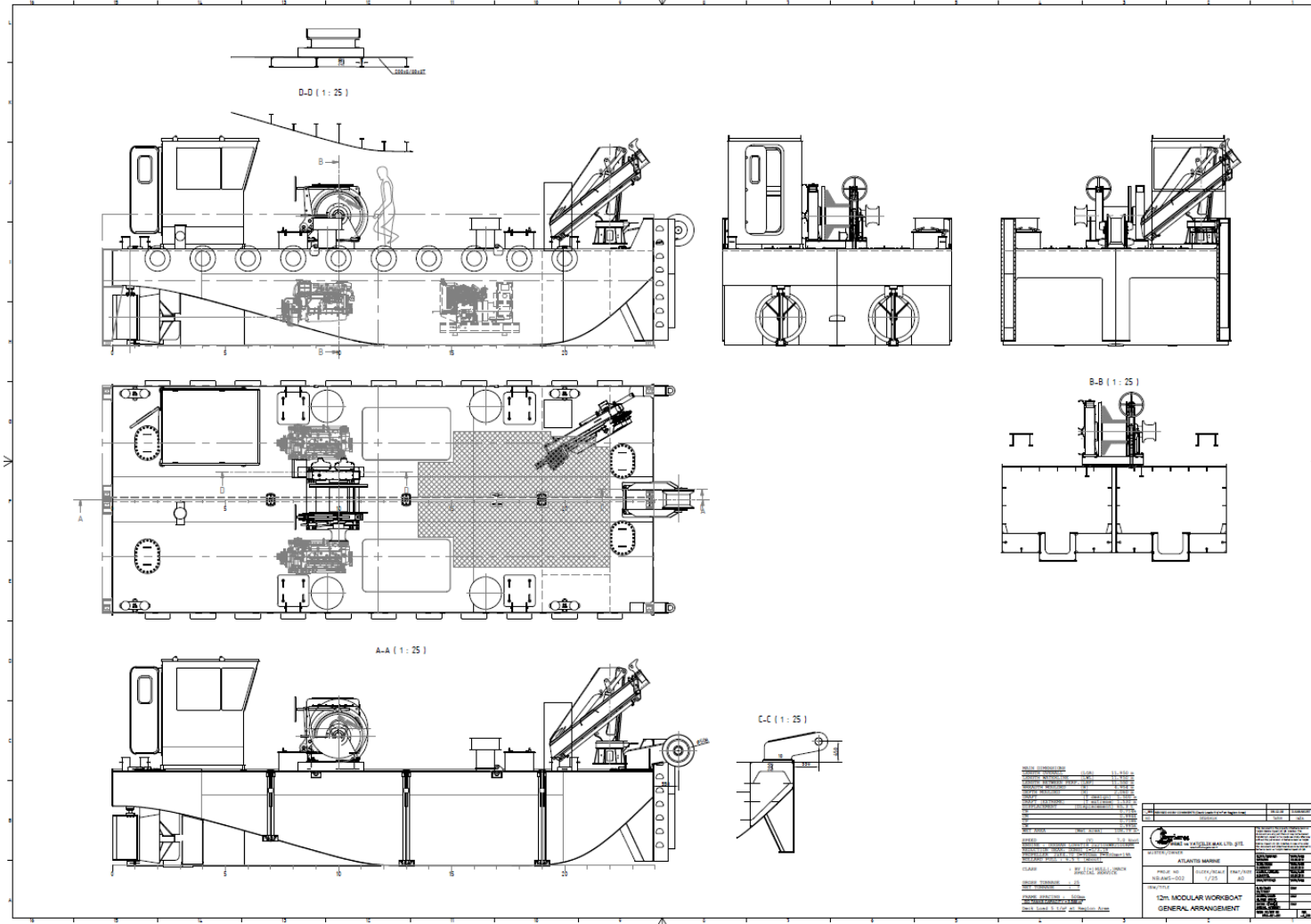
**Aluminum High Speed Crew Boats**







## Floating Docks for Yachts/Workboats



# Modular MultiCats



**New Building Experience**





## AMS Head Office in Kartal/Istanbul/Turkey

**ATLANTIS MARINE SERVİS DENİZCİLİK SAN. VE TİC. LTD. STİ.**

Esentepe Mah. Milangaz Cad. 75/A, Monumento Kartal İş Merkezi No:103

Kartal, 34870, İstanbul, **Turkey**

Tel: +90 216 290 12 06

Fax: +90 216 290 12 07

[www.atlantismarine.com.tr](http://www.atlantismarine.com.tr)



**Caner Ararat**

Managing Partner

Naval Architect & Marine Engineer

Phone: +90 532 3636830

E-mail: [caner@atlantismarine.com.tr](mailto:caner@atlantismarine.com.tr)



**Cuneyt Niran**

Managing Partner

Naval Architect & Marine Engineer

Oceangoing Chief Engineer

Phone: +90 532 3170848

E-mail:  
[cniran@atlantismarine.com.tr](mailto:cniran@atlantismarine.com.tr)